



Hand Hygiene

A Simple moment with a Big Impact

*World Hand Hygiene Day*



**IPC KSA**

Our Goal is Your Health

# HAND HYGIENE

**A SIMPLE MOMENT WITH A BIG IMPACT**



World Hand Hygiene Day





**Hand Hygiene**  
**A Simple moment with a Big Impact**

---

*World Hand Hygiene Day*



Hand Hygiene

A Simple moment with a Big Impact

World Hand Hygiene Day

# Why Hand Hygiene Matters

Hands are the most prevalent method of disease transfer in healthcare settings. Poor hand hygiene drives two critical threats:

## Healthcare-Associated Infections (HAIs)

Infections acquired during healthcare delivery, leading to complications, prolonged stays, and mortality.

## Antimicrobial Resistance

Transmission of resistant organisms between patients and environments, undermining treatment options globally.



IPC KSA

Our Goal is Your Health



Hand Hygiene

A Simple moment with a Big Impact

WorldHandHygieneDay



IPC KSA

Our Goal is Your Health



**In 1847**, Ignaz Semmelweis observed that maternal mortality from puerperal fever was **16% vs. 7%** between two Vienna obstetric clinics. Doctors moving directly from autopsies to deliveries were transmitting "cadaverous particles."

**Vienna General Hospital,  
1847**

He mandated chlorinated lime handwashing before every patient contact. Mortality fell to 3%.



## Semmelweis: The Father of Hand Hygiene

His "recognize-explain-act" approach is considered the first epidemiologically driven infection control intervention — a model still followed today.



Hand Hygiene

A Simple moment with a Big Impact

WorldHandHygieneDay



IPC KSA

Our Goal is Your Health

# Global Burden

The scale of healthcare-associated infections is staggering, according to the

WHO:

**1 in 10**

**Patients Affected**

**30%**

**ICU Infection Rate**

**7% – 15%**

**Hospitalized Patients**

Up to 50% of HAIs are preventable with proper hand hygiene (WHO). HAIs increase mortality, prolong hospital stays, and drive antimicrobial resistance.



Hand Hygiene

A Simple moment with a Big Impact

WorldHandHygieneDay



IPC KSA

Our Goal is Your Health

# Key Performance Indicators (KPIs) – Hand Hygiene National Report – Saudi Arabia

**77.72%**

Overall Hand Hygiene Compliance

**840,304 Opportunities**

Total Hand Hygiene Opportunities

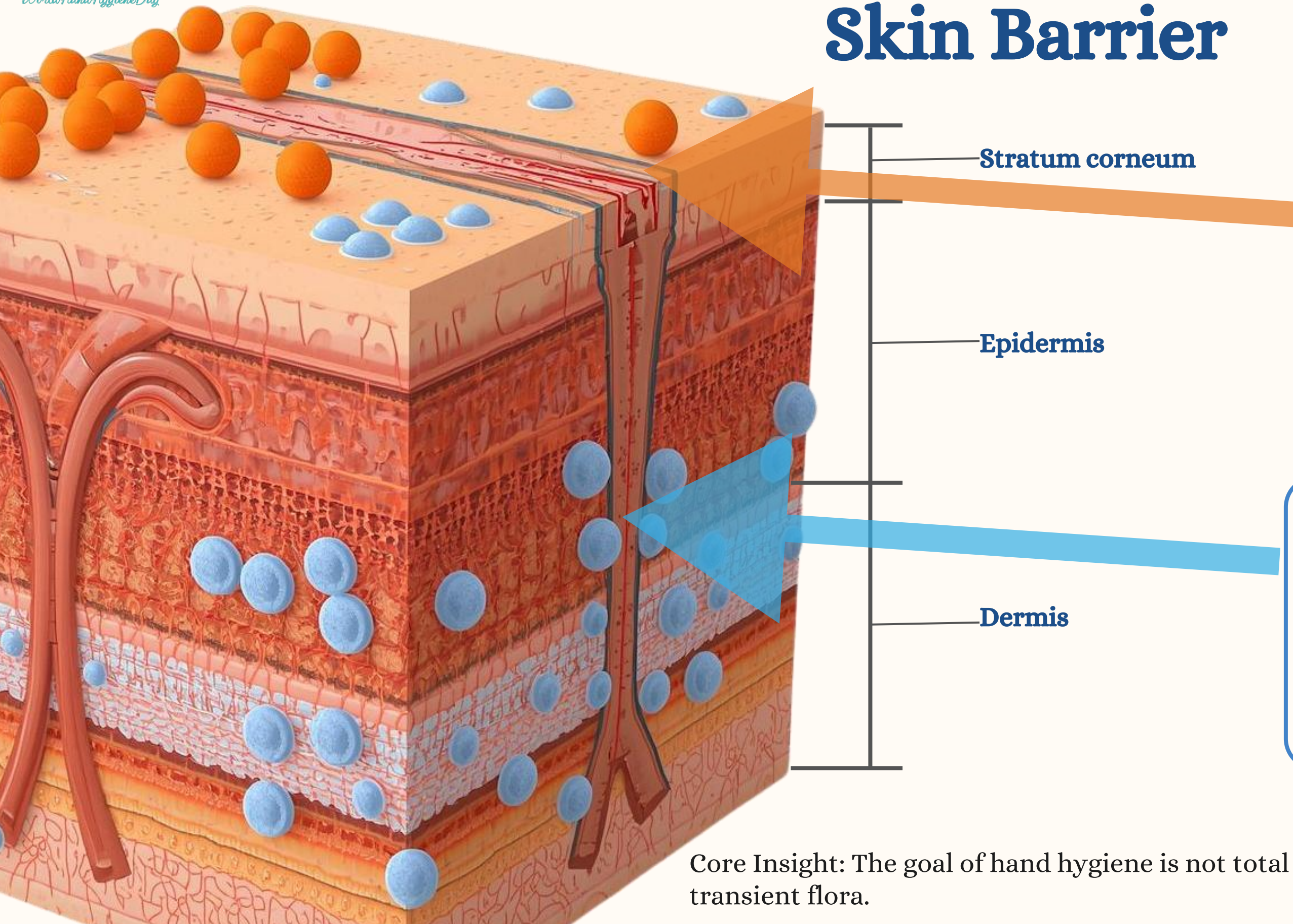
**485 Facilities**

Number of Participating Healthcare Facilities

**75% (2022) to 77.72% (2025)**

Continuous Performance Trend

# Targeting Transient Flora on the Skin Barrier



Stratum corneum

Epidermis

Dermis

## Transient Flora

Superficial pathogens acquired through direct contact with patients or contaminated environments. They colonize the outer skin layers and are the primary cause of (HAIs).

## Resident Flora

Microorganisms residing deep below the stratum corneum. They provide microbial antagonism (competing for nutrients) and are generally harmless on intact skin.

Core Insight: The goal of hand hygiene is not total sterilization, but the eradication of acquired transient flora.



Hand Hygiene

A Simple moment with a Big Impact

*WorldHandHygieneDay*



IPC KSA

Our Goal is Your Health

# Program Overview

The Hand Hygiene Program is a structured, system-wide initiative designed to monitor and improve hand hygiene practices across healthcare facilities as a fundamental component of infection prevention and control (IPC).

## Monitor

Standardized measurement of compliance across facilities, regions, and worker categories

## Improve

Performance feedback and targeted interventions to strengthen adherence

## Prevent

Reduce HAIs and limit spread of multidrug-resistant organisms (MDROs)



Hand Hygiene

A Simple moment with a Big Impact

WorldHandHygieneDay



IPC KSA

Our Goal is Your Health

# Standard precautions

Standard precautions are the minimum infection prevention practices applied to all patients- essential to reduce transmission of infectious agents



## Hand Hygiene

The most fundamental component of standard precautions



## Environmental Cleaning

Regular decontamination of surfaces and areas



## PPE

Personal protective equipment to reduce exposure



## Safe Equipment & Waste Handling

Proper management of equipment and clinical waste



Hand Hygiene

A Simple moment with a Big Impact

*World Hand Hygiene Day*



IPC KSA

Our Goal is Your Health

# Hand Hygiene

## What is hand hygiene?

Hand hygiene is:

It is the most effective measure to prevent transmission of infection in healthcare settings.

## Hand hygiene Types:

- Alcohol-based hand rub
- Handwashing with soap and water
- Surgical hand antisepsis



Hand Hygiene

A Simple moment with a Big Impact

WorldHandHygieneDay



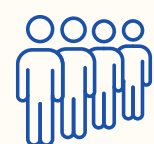
IPC KSA

Our Goal is Your Health

# Who should perform hand hygiene?

Everyone should practice hand hygiene in health care settings and in the community to protect themselves and others.

In healthcare, you are exposed to:



## Patients at Risk

Patients susceptible to colonization or infection with micro-organisms.



## Contaminated Surfaces

Contaminated surfaces and medical devices throughout the care environment.



## Body Fluids

Body fluids and direct patient contact during routine care activities.





Hand Hygiene

A Simple moment with a Big Impact

*World Hand Hygiene Day*



IPC KSA

Our Goal is Your Health

# Where is hand hygiene needed?

Appropriate hand hygiene is required throughout the healthcare environment to prevent the transmission of infections.

## **Patient Rooms & Wards**

All bedside and inpatient care areas

## **Consultation & Treatment Rooms**

Outpatient and procedural spaces

## **Storage Areas**

Equipment and stock storage rooms

## **Common Areas**

Waiting rooms, reception, cafeteria, and corridors



Hand Hygiene

A Simple moment with a Big Impact

WorldHandHygieneDay



IPC KSA

Our Goal is Your Health

# Hand hygiene in healthcare environment

Hand hygiene is essential to prevent the transmission of infectious agents within healthcare settings.  
When should it be performed?



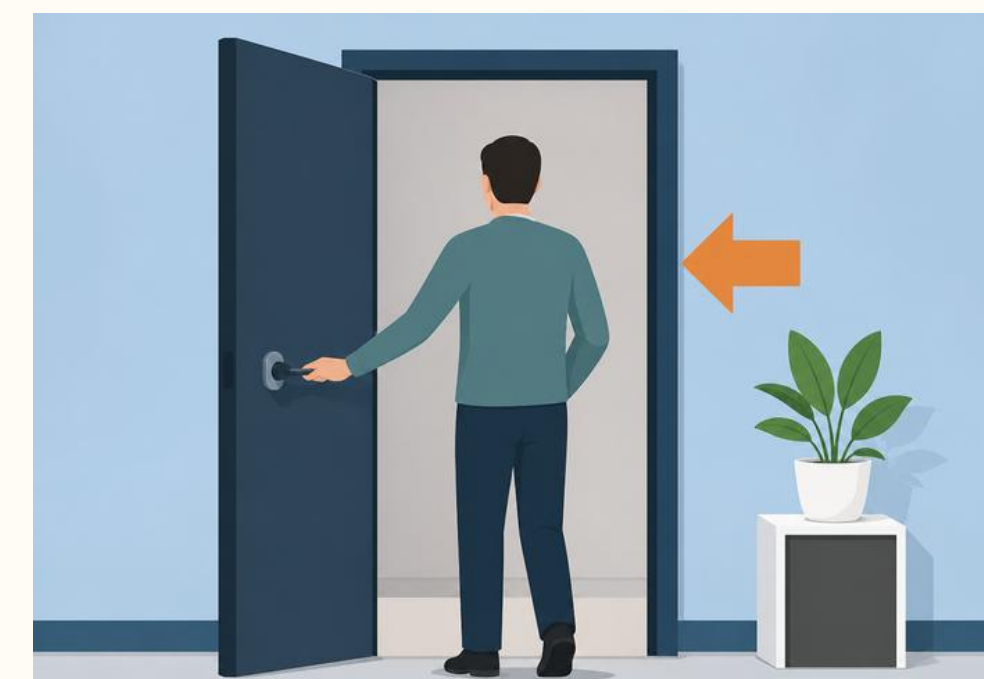
**Before**

**BEFORE** entering the healthcare environment

To minimize the risk of transmitting microorganisms to patients

**AFTER** leaving the healthcare environment

To prevent the spread of microorganisms to yourself, others, and the surrounding environment



**After**



Hand Hygiene

A Simple moment with a Big Impact

WorldHandHygieneDay



IPC KSA

Our Goal is Your Health

# Hand Hygiene Zones in Healthcare Settings



Within the healthcare environment, there are two main zones where hand hygiene is critical:

## The Patient Zone

- Includes the patient and their immediate surroundings
- High risk of contamination with patient microorganisms

## The Healthcare Zone

- Includes all areas outside the patient's immediate environment
- May be contaminated with microorganisms from multiple sources



Hand Hygiene

A Simple moment with a Big Impact

World Hand Hygiene Day

# The Patient Zone

The patient zone is a space dedicated to an individual patient for the duration of their stay.

## The Patient

The individual receiving care

## Attached Equipment

IV lines, monitors, and medical devices connected to the patient

## Immediate Surroundings

Bed, bedside table, and frequently touched surfaces



IPC KSA

Our Goal is Your Health



Hand Hygiene

A Simple moment with a Big Impact

*WorldHandHygieneDay*



IPC KSA

Our Goal is Your Health

# Hand Hygiene in the Patient Zone

Hand hygiene is essential when entering and leaving the patient zone to prevent the transmission of infectious agents.

## **BEFORE Entering**

Perform hand hygiene to protect the patient from microorganisms carried on your hands.

## **AFTER Leaving**

Perform hand hygiene to **prevent the spread** of microorganisms to yourself, others, and the healthcare environment.

Hand hygiene at zone transitions is one of the most critical moments in preventing cross-contamination.



Hand Hygiene

A Simple moment with a Big Impact

WorldHandHygieneDay



IPC KSA

Our Goal is Your Health

# The Healthcare Zone

The healthcare zone refers to all areas **outside the patient zone** within the healthcare environment.

## It includes:

- Curtains, partitions, and doors
- Shared patient areas and common surfaces
- Any space accessed by multiple individuals

## Characteristics:

- Shared by patients, healthcare workers, and visitors
- May be contaminated with microorganisms from different sources



## BEFORE Entering

Minimize the risk of transmitting microorganisms to patients

## AFTER Leaving

Prevent the spread of microorganisms to yourself, others, and the surrounding environment



Hand Hygiene

A Simple moment with a Big Impact

WorldHandHygieneDay



IPC KSA

Our Goal is Your Health

# Curtains, Partitions and Doors

Curtains, partitions, and doors act as boundaries between the patient zone and the healthcare zone. They are **not always cleaned between patients**, therefore, they may be contaminated with infectious agents

## **AFTER** touching curtains /doors

Perform hand hygiene **before** touching the patient

## **After** Touching the Patient

Perform hand hygiene **before** touching curtains, partitions, or doors





Hand Hygiene

A Simple moment with a Big Impact

WorldHandHygieneDay



IPC KSA

Our Goal is Your Health

# Scenario

Lisa is a doctor. She is seeing several patients today. As she moves between each patient in a four-bedded room, she may touch curtains in the room.

## When should Lisa perform hand hygiene?

01

### After Touching the Curtain

Curtains may carry microorganisms from the healthcare zone

02

### Before Touching a Patient

Protect the patient from any contamination on hands

03

### After Touching a Patient

Prevent spread of microorganisms to the next patient or environment



Hand Hygiene

A Simple moment with a Big Impact

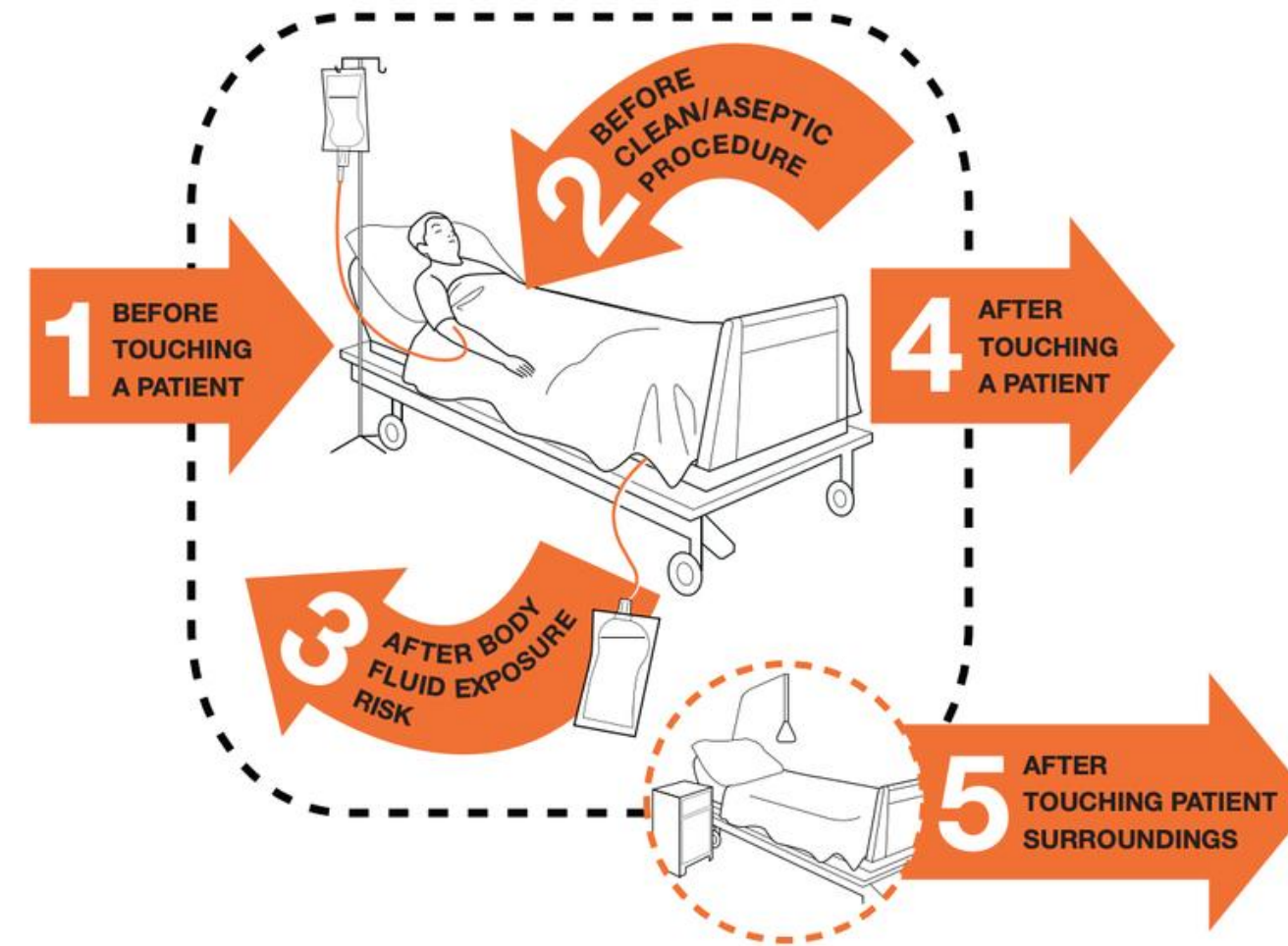
WorldHandHygieneDay



IPC KSA

Our Goal is Your Health

# Your 5 Moments for Hand Hygiene



<b>1</b>	<b>BEFORE TOUCHING A PATIENT</b>	<b>WHEN?</b>	Clean your hands before touching a patient when approaching him/her. To protect the patient against harmful germs carried on your hands.
		<b>WHY?</b>	To protect the patient against harmful germs carried on your hands.
<b>2</b>	<b>BEFORE CLEAN/ ASEPTIC PROCEDURE</b>	<b>WHEN?</b>	Clean your hands immediately before performing a clean/aseptic procedure.
		<b>WHY?</b>	To protect the patient against harmful germs, including the patient's own, from entering his/her body.
<b>3</b>	<b>AFTER BODY FLUID EXPOSURE RISK</b>	<b>WHEN?</b>	Clean your hands immediately after an exposure risk to body fluids (and after glove removal). To protect yourself and the health-care environment from harmful patient germs.
		<b>WHY?</b>	To protect yourself and the health-care environment from harmful patient germs.
<b>4</b>	<b>AFTER TOUCHING A PATIENT</b>	<b>WHEN?</b>	Clean your hands after touching a patient and her/his immediate surroundings, when leaving the patient's side. To protect yourself and the health-care environment from harmful patient germs.
		<b>WHY?</b>	To protect yourself and the health-care environment from harmful patient germs.
<b>5</b>	<b>AFTER TOUCHING PATIENT SURROUNDINGS</b>	<b>WHEN?</b>	Clean your hands after touching any object or furniture in the patient's immediate surroundings, when leaving – even if the patient has not been touched.
		<b>WHY?</b>	To protect yourself and the health-care environment from harmful patient germs.



Hand Hygiene

A Simple moment with a Big Impact

WorldHandHygieneDay



IPC KSA

Our Goal is Your Health

# Using an ABHR (or hand sanitiser)

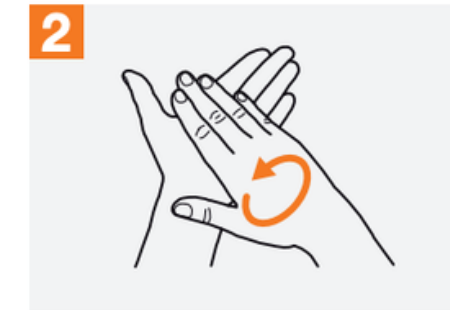
# How to Handrub?

**RUB HANDS FOR HAND HYGIENE! WASH HANDS WHEN VISIBLY SOILED**

**Duration of the entire procedure: 20-30 seconds**



Apply a palmful of the product in a cupped hand, covering all surfaces;



Rub hands palm to palm;



Right palm over left dorsum with interlaced fingers and vice versa;



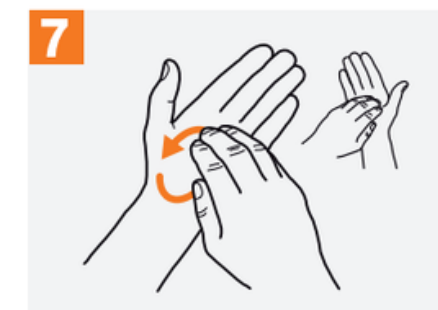
Palm to palm with fingers interlaced;



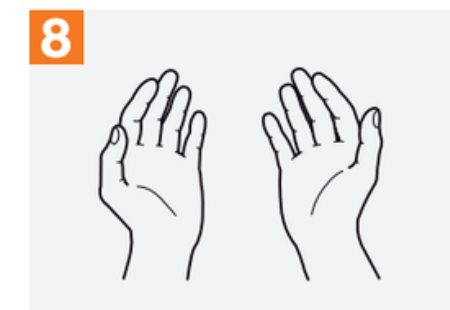
Backs of fingers to opposing palms with fingers interlocked;



Rotational rubbing of left thumb clasped in right palm and vice versa;



Rotational rubbing, backwards and forwards with clasped fingers of right hand in left palm and vice versa;



Once dry, your hands are safe.



World Health Organization

Patient Safety

A World Alliance for Safer Health Care

SAVE LIVES

Clean Your Hands

All reasonable precautions have been taken by the World Health Organization to verify the information contained in this document. However, the published material is being distributed without warranty of any kind, either expressed or implied. The responsibility for the interpretation and use of the material lies with the reader. In no event shall the World Health Organization be liable for damages arising from its use. WHO acknowledges the Hôpitaux Universitaires de Genève (HUG), in particular the members of the Infection Control Programme, for their active participation in developing this material.

May 2009

Source: WHO How to handrub? Last update 4 May



Hand Hygiene

A Simple moment with a Big Impact

WorldHandHygieneDay

# Using soap and water



IPC KSA

Our Goal is Your Health

# How to Handwash?

WASH HANDS WHEN VISIBLY SOILED! OTHERWISE, USE HANDRUB

Duration of the entire procedure: 40-60 seconds



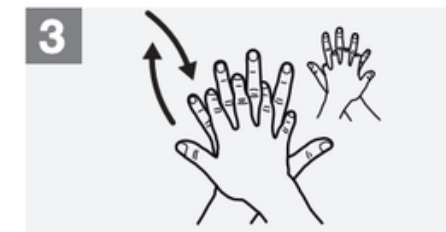
Wet hands with water;



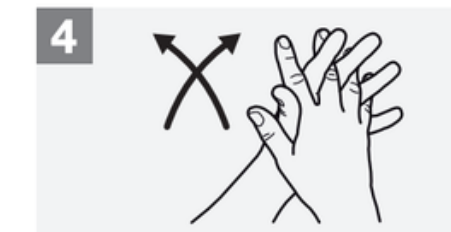
Apply enough soap to cover all hand surfaces;



Rub hands palm to palm;



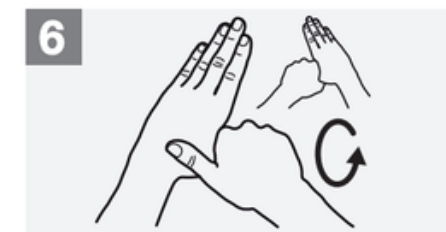
Right palm over left dorsum with interlaced fingers and vice versa;



Palm to palm with fingers interlaced;



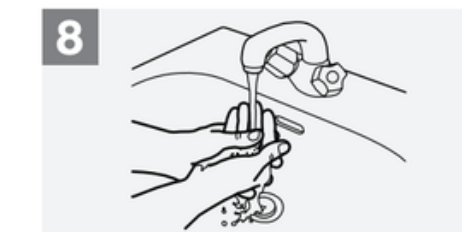
Backs of fingers to opposing palms with fingers interlocked;



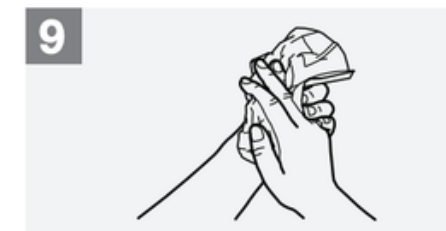
Rotational rubbing of left thumb clasped in right palm and vice versa;



Rotational rubbing, backwards and forwards with clasped fingers of right hand in left palm and vice versa;



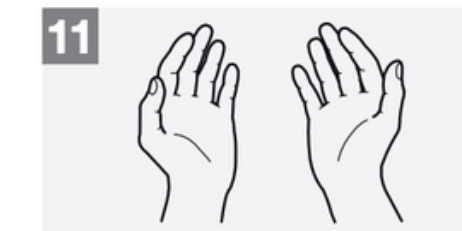
Rinse hands with water;



Dry hands thoroughly with a single use towel;



Use towel to turn off faucet;



Your hands are now safe.



World Health Organization

Patient Safety

A World Alliance for Safer Health Care

SAVE LIVES

Clean Your Hands



Hand Hygiene

A Simple moment with a Big Impact

WorldHandHygieneDay



IPC KSA

Our Goal is Your Health

# Surgical Handrubbing Technique

- Handwash with soap and water on arrival to OR, after having donned theatre clothing (cap/hat/bonnet and mask).
- Use an alcohol-based handrub (ABHR) product for surgical hand preparation, by carefully following the technique illustrated in Images 1 to 17, before every surgical procedure.
- If any residual talc or biological fluids are present when gloves are removed following the operation, handwash with soap and water.



1 Put approximately 5ml (3 doses) of ABHR in the palm of your left hand, using the elbow of your other arm to operate the dispenser.



2 Dip the fingertips of your right hand in the handrub to decontaminate under the nails (5 seconds).



3



4



5



6



7

Images 3-7: Smear the handrub on the right forearm up to the elbow. Ensure that the whole skin area is covered by using circular movements around the forearm until the handrub has fully evaporated (10-15 seconds).



8



9



10



11



12

Images 8-10: Now repeat steps 1-7 for the left hand and forearm.

Put approximately 5ml (3 doses) of ABHR in the palm of your left hand as illustrated, to rub both hands at the same time up to the wrists, following all steps in images 12-17 (20-30 seconds).

Cover the whole surface of the hands up to the wrist with ABHR, rubbing palm against palm with a rotating movement.



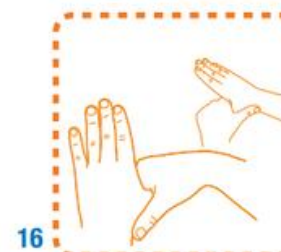
13



14



15



16



17

Rub the back of the left hand, including the wrist, moving the right palm back and forth, and vice-versa.

Rub palm against palm back and forth with fingers interlinked.

Rub the back of the fingers by holding them in the palm of the other hand with a sideways back and forth movement.

Rub the thumb of the left hand by rotating it in the clasped palm of the right hand and vice versa.

When the hands are dry, sterile surgical clothing and gloves can be donned.

Repeat this sequence (average 60 sec) the number of times that adds up to the total duration recommended by the ABHR manufacturer's instructions. This could be two or even three times.

# Surgical handrubbing



Hand Hygiene

A Simple moment with a Big Impact

WorldHandHygieneDay



IPC KSA

Our Goal is Your Health

# Shared Clinical Equipment

Shared clinical equipment is used across different patients and care areas. It can be moved between the patient zone and healthcare zone, exposing multiple patients and environments — and can act as a source of infection transmission if not properly managed.

## Clean Between Patients

Decontaminate equipment before storage and between each use

## Hand Hygiene Before & After Use

Perform hand hygiene before and after using equipment on a patient

## Hand Hygiene After Cleaning

Always perform hand hygiene after cleaning the equipment





Hand Hygiene

A Simple moment with a Big Impact

*World Hand Hygiene Day*



IPC KSA

Our Goal is Your Health

# When Else is Hand Hygiene Needed?

Hand hygiene is required not only during patient care, but also during routine activities to reduce the risk of contamination.

## BEFORE

- Starting and leaving work
- Eating or handling food or drinks
- Using shared computers or mobile devices
- Putting on gloves and other personal protective equipment (PPE)

## AFTER:

- Using the toilet
- Blowing, wiping, or touching the nose or mouth
- Smoking
- Removing gloves and other personal protective equipment (PPE)
- Contact with body fluids or potentially contaminated items
- Handling used linen, equipment, or waste
- Being in a healthcare environment during an infectious disease outbreak



Hand Hygiene

A Simple moment with a Big Impact

*World Hand Hygiene Day*



IPC KSA

Our Goal is Your Health

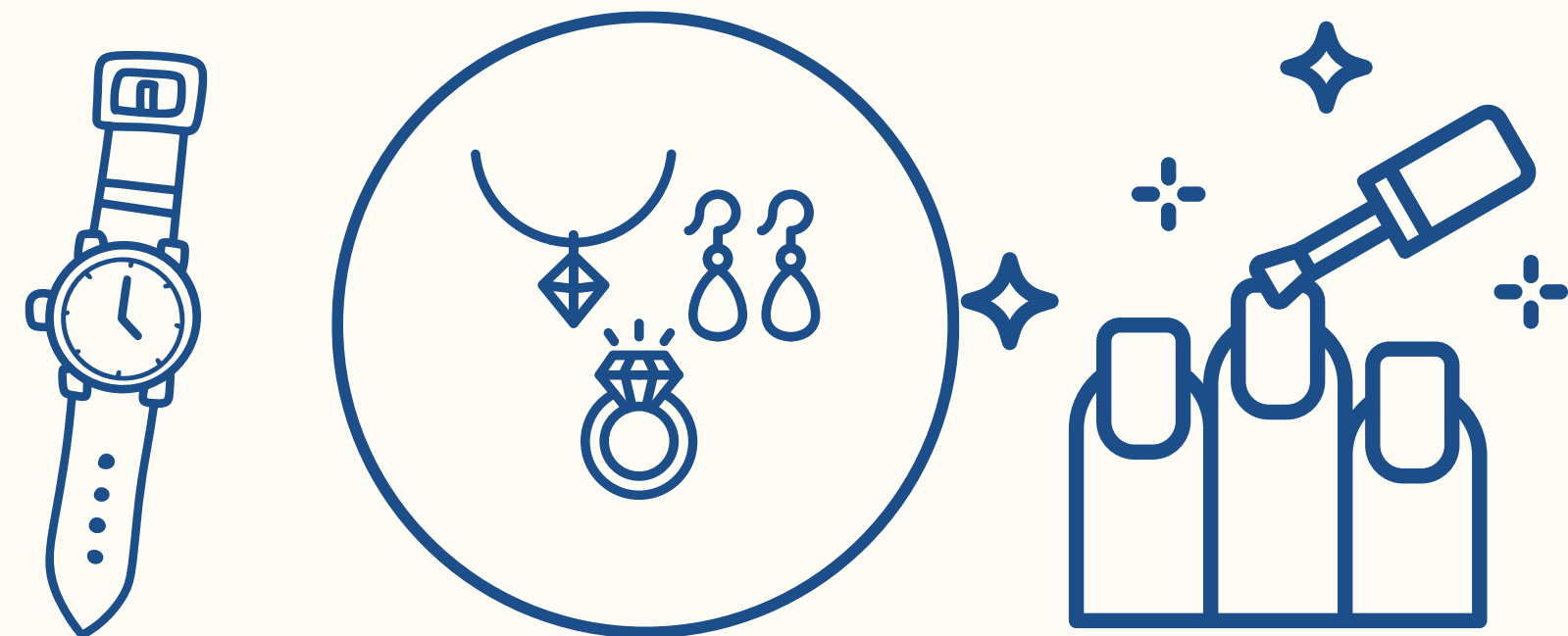
# Enhancing Hand Hygiene

Clothing, jewellery, and nail treatments can harbor microorganisms that may be transmitted to patients, the healthcare environment, and medical equipment.

## **To improve hand hygiene practice:**

- Keep nails natural, short, and clean
- Maintain bare below the elbows

(hands and forearms free of jewellery, watches, and long sleeves)





Hand Hygiene

A Simple moment with a Big Impact

*World Hand Hygiene Day*



IPC KSA

Our Goal is Your Health

# Look After Your Hands

Maintaining healthy hands is essential to ensure effective hand hygiene and prevent infection transmission.

## **Tips:**

- Avoid skin irritants such as chemicals, heat, dirt, and excessive moisture
  - Dry your hands thoroughly after washing with soap and water
  - Moisturize your hands regularly to prevent dryness and irritation
  - Protect damaged or irritated skin with a waterproof dressing
  - Report any skin problems to management
  - Seek professional advice for persistent skin irritation or damage
-



Hand Hygiene

A Simple moment with a Big Impact

WorldHandHygieneDay



IPC KSA

Our Goal is Your Health

# Monitoring Hand Hygiene in the Healthcare

Monitoring is a key component of IPC programs. It helps identify improvement opportunities, reinforce correct practices, and promote a culture of patient safety.



## Direct Observation

Auditing based on the WHO "5 Moments for Hand Hygiene."



## Education & Training

Assessing staff participation in hand hygiene programs and technique knowledge.



## Resource Audits & Feedback

Availability of products, patient feedback surveys, and corrective action plans.





Hand Hygiene

A Simple moment with a Big Impact

WorldHandHygieneDay



IPC KSA

Our Goal is Your Health

# How Can Hand Hygiene Compliance Be Improved?

Hand hygiene audit results and program data can be used to identify gaps and develop targeted improvement strategies.



## Increase Accessibility

Ensure alcohol-based hand rub is available at the point of care



## Targeted Education & Training

Provide sessions based on identified gaps in practice



## Review Educational Materials

Develop and regularly update hand hygiene educational resources



Hand Hygiene

A Simple moment with a Big Impact

WorldHandHygieneDay

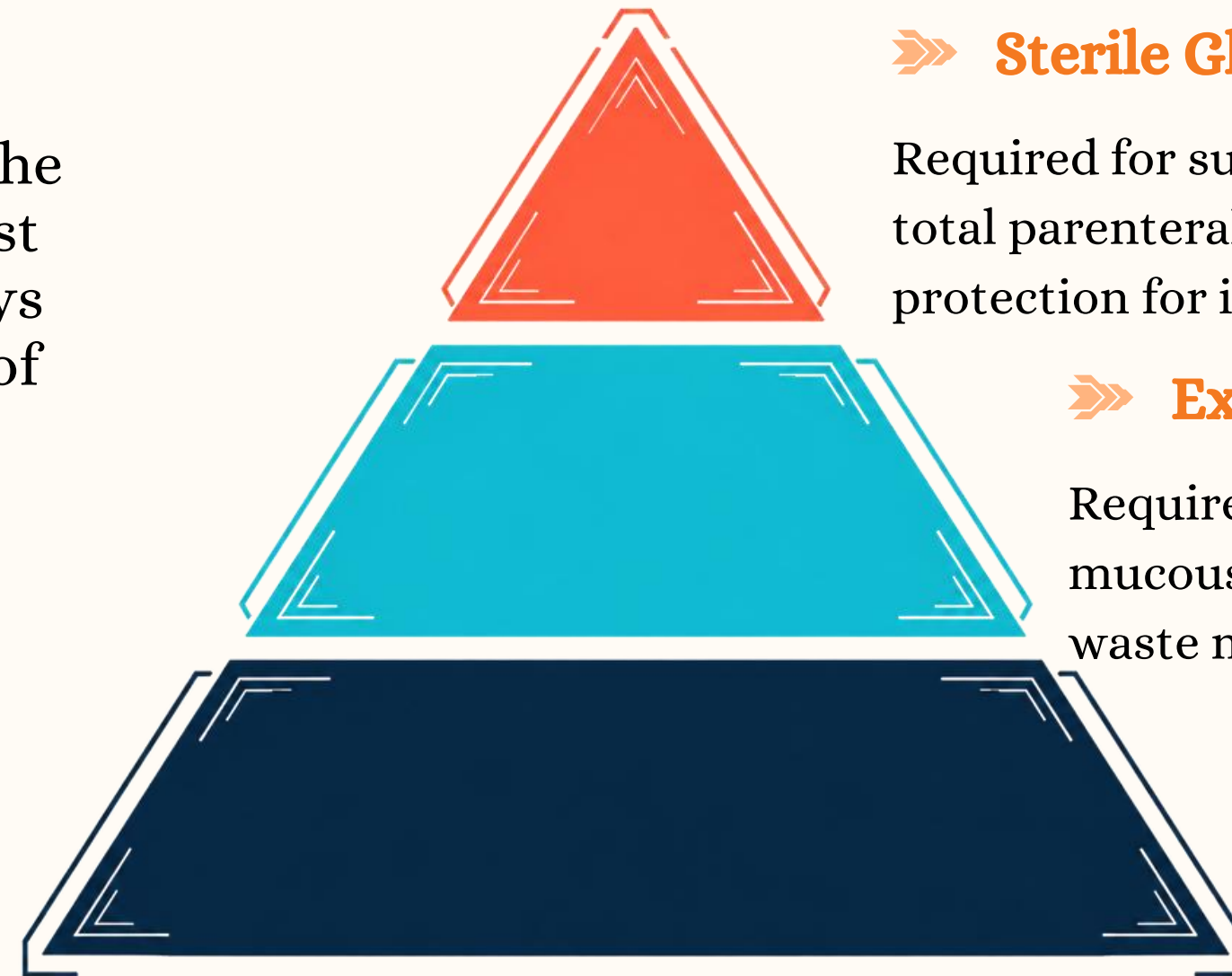


IPC KSA

Our Goal is Your Health

# HAND HYGIENE AND MEDICAL GLOVE USE

**Core Axiom:** Gloves never replace the need for hand hygiene. Gloves must be discarded after each task. Always perform hand hygiene regardless of glove use.



## »» Sterile Gloves

Required for surgical procedures, central lines, and total parenteral nutrition prep. Highest level of protection for invasive procedures.

## »» Examination Gloves

Required for direct exposure risk including blood, mucous membranes, IV insertion, and handling waste materials.

## »» No Gloves Required

Taking vitals (pulse, BP), bathing patients, giving oral medications, moving furniture. Hand hygiene still essential.

Always perform hand hygiene before and after glove use. Gloves are not a substitute for proper hand washing protocols.



Hand Hygiene  
A Simple moment with a Big Impact  
World Hand Hygiene Day



World Health Organization

Patient Safety  
A World Alliance for Safer Health Care

SAVE LIVES  
Clean Your Hands

### Observation Form

Facility:  Period Number\*:  Session Number\*:   
 Service:  Date: (dd/mm/yy)  /  /  Observer:   
 Ward:  Start/End time: (hh:mm)  :  /  :  Page N°:   
 Department:  Session duration: (mm)  City\*\*:   
 Country\*\*:

Prof.cat Code N°	Prof.cat Code N°	Prof.cat Code N°	Prof.cat Code N°
Opp. <input type="checkbox"/> 1 Indication <input type="checkbox"/> bef-pat. <input type="checkbox"/> bef-asept. <input type="checkbox"/> aft-b.f. <input type="checkbox"/> aft-pat. <input type="checkbox"/> aft.p.surr. HH Action <input type="checkbox"/> HR <input type="checkbox"/> HW <input type="radio"/> missed <input type="checkbox"/> gloves	Opp. <input type="checkbox"/> 1 Indication <input type="checkbox"/> bef-pat. <input type="checkbox"/> bef-asept. <input type="checkbox"/> aft-b.f. <input type="checkbox"/> aft-pat. <input type="checkbox"/> aft.p.surr. HH Action <input type="checkbox"/> HR <input type="checkbox"/> HW <input type="radio"/> missed <input type="checkbox"/> gloves	Opp. <input type="checkbox"/> 1 Indication <input type="checkbox"/> bef-pat. <input type="checkbox"/> bef-asept. <input type="checkbox"/> aft-b.f. <input type="checkbox"/> aft-pat. <input type="checkbox"/> aft.p.surr. HH Action <input type="checkbox"/> HR <input type="checkbox"/> HW <input type="radio"/> missed <input type="checkbox"/> gloves	Opp. <input type="checkbox"/> 1 Indication <input type="checkbox"/> bef-pat. <input type="checkbox"/> bef-asept. <input type="checkbox"/> aft-b.f. <input type="checkbox"/> aft-pat. <input type="checkbox"/> aft.p.surr. HH Action <input type="checkbox"/> HR <input type="checkbox"/> HW <input type="radio"/> missed <input type="checkbox"/> gloves
Opp. <input type="checkbox"/> 2 Indication <input type="checkbox"/> bef-pat. <input type="checkbox"/> bef-asept. <input type="checkbox"/> aft-b.f. <input type="checkbox"/> aft-pat. <input type="checkbox"/> aft.p.surr. HH Action <input type="checkbox"/> HR <input type="checkbox"/> HW <input type="radio"/> missed <input type="checkbox"/> gloves	Opp. <input type="checkbox"/> 2 Indication <input type="checkbox"/> bef-pat. <input type="checkbox"/> bef-asept. <input type="checkbox"/> aft-b.f. <input type="checkbox"/> aft-pat. <input type="checkbox"/> aft.p.surr. HH Action <input type="checkbox"/> HR <input type="checkbox"/> HW <input type="radio"/> missed <input type="checkbox"/> gloves	Opp. <input type="checkbox"/> 2 Indication <input type="checkbox"/> bef-pat. <input type="checkbox"/> bef-asept. <input type="checkbox"/> aft-b.f. <input type="checkbox"/> aft-pat. <input type="checkbox"/> aft.p.surr. HH Action <input type="checkbox"/> HR <input type="checkbox"/> HW <input type="radio"/> missed <input type="checkbox"/> gloves	Opp. <input type="checkbox"/> 2 Indication <input type="checkbox"/> bef-pat. <input type="checkbox"/> bef-asept. <input type="checkbox"/> aft-b.f. <input type="checkbox"/> aft-pat. <input type="checkbox"/> aft.p.surr. HH Action <input type="checkbox"/> HR <input type="checkbox"/> HW <input type="radio"/> missed <input type="checkbox"/> gloves
Opp. <input type="checkbox"/> 3 Indication <input type="checkbox"/> bef-pat. <input type="checkbox"/> bef-asept. <input type="checkbox"/> aft-b.f. <input type="checkbox"/> aft-pat. <input type="checkbox"/> aft.p.surr. HH Action <input type="checkbox"/> HR <input type="checkbox"/> HW <input type="radio"/> missed <input type="checkbox"/> gloves	Opp. <input type="checkbox"/> 3 Indication <input type="checkbox"/> bef-pat. <input type="checkbox"/> bef-asept. <input type="checkbox"/> aft-b.f. <input type="checkbox"/> aft-pat. <input type="checkbox"/> aft.p.surr. HH Action <input type="checkbox"/> HR <input type="checkbox"/> HW <input type="radio"/> missed <input type="checkbox"/> gloves	Opp. <input type="checkbox"/> 3 Indication <input type="checkbox"/> bef-pat. <input type="checkbox"/> bef-asept. <input type="checkbox"/> aft-b.f. <input type="checkbox"/> aft-pat. <input type="checkbox"/> aft.p.surr. HH Action <input type="checkbox"/> HR <input type="checkbox"/> HW <input type="radio"/> missed <input type="checkbox"/> gloves	Opp. <input type="checkbox"/> 3 Indication <input type="checkbox"/> bef-pat. <input type="checkbox"/> bef-asept. <input type="checkbox"/> aft-b.f. <input type="checkbox"/> aft-pat. <input type="checkbox"/> aft.p.surr. HH Action <input type="checkbox"/> HR <input type="checkbox"/> HW <input type="radio"/> missed <input type="checkbox"/> gloves
Opp. <input type="checkbox"/> 4 Indication <input type="checkbox"/> bef-pat. <input type="checkbox"/> bef-asept. <input type="checkbox"/> aft-b.f. <input type="checkbox"/> aft-pat. <input type="checkbox"/> aft.p.surr. HH Action <input type="checkbox"/> HR <input type="checkbox"/> HW <input type="radio"/> missed <input type="checkbox"/> gloves	Opp. <input type="checkbox"/> 4 Indication <input type="checkbox"/> bef-pat. <input type="checkbox"/> bef-asept. <input type="checkbox"/> aft-b.f. <input type="checkbox"/> aft-pat. <input type="checkbox"/> aft.p.surr. HH Action <input type="checkbox"/> HR <input type="checkbox"/> HW <input type="radio"/> missed <input type="checkbox"/> gloves	Opp. <input type="checkbox"/> 4 Indication <input type="checkbox"/> bef-pat. <input type="checkbox"/> bef-asept. <input type="checkbox"/> aft-b.f. <input type="checkbox"/> aft-pat. <input type="checkbox"/> aft.p.surr. HH Action <input type="checkbox"/> HR <input type="checkbox"/> HW <input type="radio"/> missed <input type="checkbox"/> gloves	Opp. <input type="checkbox"/> 4 Indication <input type="checkbox"/> bef-pat. <input type="checkbox"/> bef-asept. <input type="checkbox"/> aft-b.f. <input type="checkbox"/> aft-pat. <input type="checkbox"/> aft.p.surr. HH Action <input type="checkbox"/> HR <input type="checkbox"/> HW <input type="radio"/> missed <input type="checkbox"/> gloves
Opp. <input type="checkbox"/> 5 Indication <input type="checkbox"/> bef-pat. <input type="checkbox"/> bef-asept. <input type="checkbox"/> aft-b.f. <input type="checkbox"/> aft-pat. <input type="checkbox"/> aft.p.surr. HH Action <input type="checkbox"/> HR <input type="checkbox"/> HW <input type="radio"/> missed <input type="checkbox"/> gloves	Opp. <input type="checkbox"/> 5 Indication <input type="checkbox"/> bef-pat. <input type="checkbox"/> bef-asept. <input type="checkbox"/> aft-b.f. <input type="checkbox"/> aft-pat. <input type="checkbox"/> aft.p.surr. HH Action <input type="checkbox"/> HR <input type="checkbox"/> HW <input type="radio"/> missed <input type="checkbox"/> gloves	Opp. <input type="checkbox"/> 5 Indication <input type="checkbox"/> bef-pat. <input type="checkbox"/> bef-asept. <input type="checkbox"/> aft-b.f. <input type="checkbox"/> aft-pat. <input type="checkbox"/> aft.p.surr. HH Action <input type="checkbox"/> HR <input type="checkbox"/> HW <input type="radio"/> missed <input type="checkbox"/> gloves	Opp. <input type="checkbox"/> 5 Indication <input type="checkbox"/> bef-pat. <input type="checkbox"/> bef-asept. <input type="checkbox"/> aft-b.f. <input type="checkbox"/> aft-pat. <input type="checkbox"/> aft.p.surr. HH Action <input type="checkbox"/> HR <input type="checkbox"/> HW <input type="radio"/> missed <input type="checkbox"/> gloves
Opp. <input type="checkbox"/> 6 Indication <input type="checkbox"/> bef-pat. <input type="checkbox"/> bef-asept. <input type="checkbox"/> aft-b.f. <input type="checkbox"/> aft-pat. <input type="checkbox"/> aft.p.surr. HH Action <input type="checkbox"/> HR <input type="checkbox"/> HW <input type="radio"/> missed <input type="checkbox"/> gloves	Opp. <input type="checkbox"/> 6 Indication <input type="checkbox"/> bef-pat. <input type="checkbox"/> bef-asept. <input type="checkbox"/> aft-b.f. <input type="checkbox"/> aft-pat. <input type="checkbox"/> aft.p.surr. HH Action <input type="checkbox"/> HR <input type="checkbox"/> HW <input type="radio"/> missed <input type="checkbox"/> gloves	Opp. <input type="checkbox"/> 6 Indication <input type="checkbox"/> bef-pat. <input type="checkbox"/> bef-asept. <input type="checkbox"/> aft-b.f. <input type="checkbox"/> aft-pat. <input type="checkbox"/> aft.p.surr. HH Action <input type="checkbox"/> HR <input type="checkbox"/> HW <input type="radio"/> missed <input type="checkbox"/> gloves	Opp. <input type="checkbox"/> 6 Indication <input type="checkbox"/> bef-pat. <input type="checkbox"/> bef-asept. <input type="checkbox"/> aft-b.f. <input type="checkbox"/> aft-pat. <input type="checkbox"/> aft.p.surr. HH Action <input type="checkbox"/> HR <input type="checkbox"/> HW <input type="radio"/> missed <input type="checkbox"/> gloves
Opp. <input type="checkbox"/> 7 Indication <input type="checkbox"/> bef-pat. <input type="checkbox"/> bef-asept. <input type="checkbox"/> aft-b.f. <input type="checkbox"/> aft-pat. <input type="checkbox"/> aft.p.surr. HH Action <input type="checkbox"/> HR <input type="checkbox"/> HW <input type="radio"/> missed <input type="checkbox"/> gloves	Opp. <input type="checkbox"/> 7 Indication <input type="checkbox"/> bef-pat. <input type="checkbox"/> bef-asept. <input type="checkbox"/> aft-b.f. <input type="checkbox"/> aft-pat. <input type="checkbox"/> aft.p.surr. HH Action <input type="checkbox"/> HR <input type="checkbox"/> HW <input type="radio"/> missed <input type="checkbox"/> gloves	Opp. <input type="checkbox"/> 7 Indication <input type="checkbox"/> bef-pat. <input type="checkbox"/> bef-asept. <input type="checkbox"/> aft-b.f. <input type="checkbox"/> aft-pat. <input type="checkbox"/> aft.p.surr. HH Action <input type="checkbox"/> HR <input type="checkbox"/> HW <input type="radio"/> missed <input type="checkbox"/> gloves	Opp. <input type="checkbox"/> 7 Indication <input type="checkbox"/> bef-pat. <input type="checkbox"/> bef-asept. <input type="checkbox"/> aft-b.f. <input type="checkbox"/> aft-pat. <input type="checkbox"/> aft.p.surr. HH Action <input type="checkbox"/> HR <input type="checkbox"/> HW <input type="radio"/> missed <input type="checkbox"/> gloves
Opp. <input type="checkbox"/> 8 Indication <input type="checkbox"/> bef-pat. <input type="checkbox"/> bef-asept. <input type="checkbox"/> aft-b.f. <input type="checkbox"/> aft-pat. <input type="checkbox"/> aft.p.surr. HH Action <input type="checkbox"/> HR <input type="checkbox"/> HW <input type="radio"/> missed <input type="checkbox"/> gloves	Opp. <input type="checkbox"/> 8 Indication <input type="checkbox"/> bef-pat. <input type="checkbox"/> bef-asept. <input type="checkbox"/> aft-b.f. <input type="checkbox"/> aft-pat. <input type="checkbox"/> aft.p.surr. HH Action <input type="checkbox"/> HR <input type="checkbox"/> HW <input type="radio"/> missed <input type="checkbox"/> gloves	Opp. <input type="checkbox"/> 8 Indication <input type="checkbox"/> bef-pat. <input type="checkbox"/> bef-asept. <input type="checkbox"/> aft-b.f. <input type="checkbox"/> aft-pat. <input type="checkbox"/> aft.p.surr. HH Action <input type="checkbox"/> HR <input type="checkbox"/> HW <input type="radio"/> missed <input type="checkbox"/> gloves	Opp. <input type="checkbox"/> 8 Indication <input type="checkbox"/> bef-pat. <input type="checkbox"/> bef-asept. <input type="checkbox"/> aft-b.f. <input type="checkbox"/> aft-pat. <input type="checkbox"/> aft.p.surr. HH Action <input type="checkbox"/> HR <input type="checkbox"/> HW <input type="radio"/> missed <input type="checkbox"/> gloves

\* To be completed by the data manager.  
 \*\* Optional, to be used if appropriate, according to the local needs and regulations.



Patient Safety  
A World Alliance for Safer Health Care

SAVE LIVES  
Clean Your Hands

### Observation Form – Basic Compliance Calculation

Session N°	Facility: Prof.cat.			Period: Prof.cat.			Setting: Prof.cat.			Total per session		
	Opp (n)	HW (n)	HR (n)	Opp (n)	HW (n)	HR (n)	Opp (n)	HW (n)	HR (n)	Opp (n)	HW (n)	HR (n)
1												
2												
3												
4												
5												
6												
7												
8												
9												
10												
11												
12												
13												
14												
15												
16												
17												
18												
19												
20												
<b>Total</b>												
<b>Calculation</b>	Act (n) =			Act (n) =			Act (n) =			Act (n) =		
	Opp (n) =			Opp (n) =			Opp (n) =			Opp (n) =		
<b>Compliance</b>												

$$\text{Compliance (\%)} = \frac{\text{Actions}}{\text{Opportunities}} \times 100$$

#### Instructions for use

- Define the setting outlining the scope for analysis and report related data according to the chosen setting.
- Check data in the observation form. Hand hygiene actions not related to an indication should not be taken into account and vice versa.
- Report the session number and the related observation data in the same line. This attribution of session number validates the fact that data has been taken into count for compliance calculation.
- Results per professional category and per session (vertical):
  - Sum up recorded opportunities (opp) in the case report form per professional category: report the sum in the corresponding cell in the calculation form.
  - Sum up the positive hand hygiene actions related to the total of opportunities above, making difference between handwash (HW) and handrub (HR): report the sum in the corresponding cell in the calculation form.
  - Proceed in the same way for each session (data record form).
  - Add up all sums per each professional category and put the calculation to calculate the compliance rate (given in percent)
- The addition of results of each line permits to get the global compliance at the end of the last right column.



IPC KSA  
Our Goal is Your Health



Hand Hygiene

A Simple moment with a Big Impact

*World Hand Hygiene Day*



IPC KSA

Our Goal is Your Health

# SCENARIO 1: Before touching a patient

## 1c – Hand hygiene at the right moment?

The nurse performs handrubbing in the corridor (hand hygiene action is useless)

She opens the door (last contact with the environment in the health-care area) and goes into the room towards the patient

She helps the patient to bring his arm out from under the sheets (hand hygiene action missed)

### **Key messages**

After performing hand hygiene in the corridor (additional action not corresponding to any recommended indication), the nurse touches the door handle and thus potentially contaminates her hand with germs belonging to the health-care area. She then misses the action before touching the patient, potentially contaminating him with those germs.



Hand Hygiene

A Simple moment with a Big Impact

WorldHandHygieneDay



IPC KSA

Our Goal is Your Health

# SCENARIO 1: Before touching a patient 1c – Hand hygiene at the right moment?

## Observation Form: scenario 1c

Facility:	AIC Kijabe Hospital	Period Number*:	1	Session Number*:	1
Service:	Surgery	Date: (dd/mm/yy)	05 / 05 / 09	Observer: (initials)	LB
Ward:	Surgery B	Start/End time: (hh:mm)	10 :00 / 10 : 20	Page N°:	
Department:	Surgical	Session duration: (mm)	20	City**:	Kijabe
Country**:	Kenya				

Prof.cat	Nurse/Midwife	Prof.cat		Prof.cat		Prof.cat					
Code	1.1	Code		Code		Code					
N°	1	N°		N°		N°					
Opp.	Indication	HH Action	Opp.	Indication	HH Action	Opp.	Indication	HH Action	Opp.	Indication	HH Action
1	<input checked="" type="checkbox"/> bef-pat. <input type="checkbox"/> bef-asept. <input type="checkbox"/> aft-b. f. <input type="checkbox"/> aft-pat. <input type="checkbox"/> aft. p. surr.	<input type="checkbox"/> HR <input type="checkbox"/> HW <input checked="" type="radio"/> missed <input type="radio"/> gloves	1	<input type="checkbox"/> bef-pat. <input type="checkbox"/> bef-asept. <input type="checkbox"/> aft-b. f. <input type="checkbox"/> aft-pat. <input type="checkbox"/> aft. p. surr.	<input type="checkbox"/> HR <input type="checkbox"/> HW <input type="radio"/> missed <input type="radio"/> gloves	1	<input type="checkbox"/> bef-pat. <input type="checkbox"/> bef-asept. <input type="checkbox"/> aft-b. f. <input type="checkbox"/> aft-pat. <input type="checkbox"/> aft. p. surr.	<input type="checkbox"/> HR <input type="checkbox"/> HW <input type="radio"/> missed <input type="radio"/> gloves	1	<input type="checkbox"/> bef-pat. <input type="checkbox"/> bef-asept. <input type="checkbox"/> aft-b. f. <input type="checkbox"/> aft-pat. <input type="checkbox"/> aft. p. surr.	<input type="checkbox"/> HR <input type="checkbox"/> HW <input type="radio"/> missed <input type="radio"/> gloves
2	<input type="checkbox"/> bef-pat. <input type="checkbox"/> bef-asept. <input type="checkbox"/> aft-b. f. <input type="checkbox"/> aft-pat. <input type="checkbox"/> aft. p. surr.	<input type="checkbox"/> HR <input type="checkbox"/> HW <input type="radio"/> missed <input type="radio"/> gloves	2	<input type="checkbox"/> bef-pat. <input type="checkbox"/> bef-asept. <input type="checkbox"/> aft-b. f. <input type="checkbox"/> aft-pat. <input type="checkbox"/> aft. p. surr.	<input type="checkbox"/> HR <input type="checkbox"/> HW <input type="radio"/> missed <input type="radio"/> gloves	2	<input type="checkbox"/> bef-pat. <input type="checkbox"/> bef-asept. <input type="checkbox"/> aft-b. f. <input type="checkbox"/> aft-pat. <input type="checkbox"/> aft. p. surr.	<input type="checkbox"/> HR <input type="checkbox"/> HW <input type="radio"/> missed <input type="radio"/> gloves	2	<input type="checkbox"/> bef-pat. <input type="checkbox"/> bef-asept. <input type="checkbox"/> aft-b. f. <input type="checkbox"/> aft-pat. <input type="checkbox"/> aft. p. surr.	<input type="checkbox"/> HR <input type="checkbox"/> HW <input type="radio"/> missed <input type="radio"/> gloves
3	<input type="checkbox"/> bef-pat. <input type="checkbox"/> bef-asept. <input type="checkbox"/> aft-b. f. <input type="checkbox"/> aft-pat. <input type="checkbox"/> aft. p. surr.	<input type="checkbox"/> HR <input type="checkbox"/> HW <input type="radio"/> missed <input type="radio"/> gloves	3	<input type="checkbox"/> bef-pat. <input type="checkbox"/> bef-asept. <input type="checkbox"/> aft-b. f. <input type="checkbox"/> aft-pat. <input type="checkbox"/> aft. p. surr.	<input type="checkbox"/> HR <input type="checkbox"/> HW <input type="radio"/> missed <input type="radio"/> gloves	3	<input type="checkbox"/> bef-pat. <input type="checkbox"/> bef-asept. <input type="checkbox"/> aft-b. f. <input type="checkbox"/> aft-pat. <input type="checkbox"/> aft. p. surr.	<input type="checkbox"/> HR <input type="checkbox"/> HW <input type="radio"/> missed <input type="radio"/> gloves	3	<input type="checkbox"/> bef-pat. <input type="checkbox"/> bef-asept. <input type="checkbox"/> aft-b. f. <input type="checkbox"/> aft-pat. <input type="checkbox"/> aft. p. surr.	<input type="checkbox"/> HR <input type="checkbox"/> HW <input type="radio"/> missed <input type="radio"/> gloves



Hand Hygiene

A Simple moment with a Big Impact

WorldHandHygieneDay



IPC KSA

Our Goal is Your Health

# SCENARIO 2: Before clean/aseptic procedure

## 2a – Clean/aseptic procedure within care sequence

The nurse enters the room and places the instrument tray with the items ready for injection on the night table (last contact with the environment in the health-care area)

She performs hand hygiene by handrubbing (indication: before touching a patient)

She helps the patient to bring his arm out from under the sheets (first patient contact)

She moves the night table (contact with patient surroundings)

She pours antiseptic onto the swabs

She performs hand hygiene by handrubbing (indication: before clean/aseptic procedure)

She opens the tap on the peripheral venous catheter, gives the injection and closes the tap again (aseptic task)

### **Key messages**

The nurse has a first direct contact with the patient (she performs hand hygiene as indicated) and the patient surroundings; she then repeats the hand hygiene action before the clean/aseptic procedure to protect the patient from his own germs.



Hand Hygiene

A Simple moment with a Big Impact

WorldHandHygieneDay



IPC KSA

Our Goal is Your Health

# SCENARIO 2: Before clean/aseptic procedure

## 2a – Clean/aseptic procedure within care sequence

### Observation Form: scenario 2a

Facility:	AIC Kijabe Hospital	Period Number*:	1	Session Number*:	2
Service:	Surgery	Date: (dd/mm/yy)	05 / 05 / 09	Observer: (initials)	LB
Ward:	Surgery B	Start/End time: (hh:mm)	10 : 20 / 10 : 35	Page N°:	
Department:	Surgical	Session duration: (mm)	15	City**:	Kijabe
Country**:	Kenya				

Prof.cat	Nurse/Midwife	Prof.cat		Prof.cat		Prof.cat					
Code	1.1	Code		Code		Code					
N°	1	N°		N°		N°					
Opp.	Indication	HH Action	Opp.	Indication	HH Action	Opp.	Indication	HH Action	Opp.	Indication	HH Action
1	<input checked="" type="checkbox"/> bef-pat. <input type="checkbox"/> bef-asept. <input type="checkbox"/> aft-b.f. <input type="checkbox"/> aft-pat. <input type="checkbox"/> aft.p.surr.	<input checked="" type="checkbox"/> HR <input type="checkbox"/> HW <input type="radio"/> missed <input type="radio"/> gloves	1	<input type="checkbox"/> bef-pat. <input type="checkbox"/> bef-asept. <input type="checkbox"/> aft-b.f. <input type="checkbox"/> aft-pat. <input type="checkbox"/> aft.p.surr.	<input type="checkbox"/> HR <input type="checkbox"/> HW <input type="radio"/> missed <input type="radio"/> gloves	1	<input type="checkbox"/> bef-pat. <input type="checkbox"/> bef-asept. <input type="checkbox"/> aft-b.f. <input type="checkbox"/> aft-pat. <input type="checkbox"/> aft.p.surr.	<input type="checkbox"/> HR <input type="checkbox"/> HW <input type="radio"/> missed <input type="radio"/> gloves	1	<input type="checkbox"/> bef-pat. <input type="checkbox"/> bef-asept. <input type="checkbox"/> aft-b.f. <input type="checkbox"/> aft-pat. <input type="checkbox"/> aft.p.surr.	<input type="checkbox"/> HR <input type="checkbox"/> HW <input type="radio"/> missed <input type="radio"/> gloves
2	<input type="checkbox"/> bef-pat. <input checked="" type="checkbox"/> bef-asept. <input type="checkbox"/> aft-b.f. <input type="checkbox"/> aft-pat. <input type="checkbox"/> aft.p.surr.	<input checked="" type="checkbox"/> HR <input type="checkbox"/> HW <input type="radio"/> missed <input type="radio"/> gloves	2	<input type="checkbox"/> bef-pat. <input type="checkbox"/> bef-asept. <input type="checkbox"/> aft-b.f. <input type="checkbox"/> aft-pat. <input type="checkbox"/> aft.p.surr.	<input type="checkbox"/> HR <input type="checkbox"/> HW <input type="radio"/> missed <input type="radio"/> gloves	2	<input type="checkbox"/> bef-pat. <input type="checkbox"/> bef-asept. <input type="checkbox"/> aft-b.f. <input type="checkbox"/> aft-pat. <input type="checkbox"/> aft.p.surr.	<input type="checkbox"/> HR <input type="checkbox"/> HW <input type="radio"/> missed <input type="radio"/> gloves	2	<input type="checkbox"/> bef-pat. <input type="checkbox"/> bef-asept. <input type="checkbox"/> aft-b.f. <input type="checkbox"/> aft-pat. <input type="checkbox"/> aft.p.surr.	<input type="checkbox"/> HR <input type="checkbox"/> HW <input type="radio"/> missed <input type="radio"/> gloves
3	<input type="checkbox"/> bef-pat. <input type="checkbox"/> bef-asept. <input type="checkbox"/> aft-b.f. <input type="checkbox"/> aft-pat. <input type="checkbox"/> aft.p.surr.	<input type="checkbox"/> HR <input type="checkbox"/> HW <input type="radio"/> missed <input type="radio"/> gloves	3	<input type="checkbox"/> bef-pat. <input type="checkbox"/> bef-asept. <input type="checkbox"/> aft-b.f. <input type="checkbox"/> aft-pat. <input type="checkbox"/> aft.p.surr.	<input type="checkbox"/> HR <input type="checkbox"/> HW <input type="radio"/> missed <input type="radio"/> gloves	3	<input type="checkbox"/> bef-pat. <input type="checkbox"/> bef-asept. <input type="checkbox"/> aft-b.f. <input type="checkbox"/> aft-pat. <input type="checkbox"/> aft.p.surr.	<input type="checkbox"/> HR <input type="checkbox"/> HW <input type="radio"/> missed <input type="radio"/> gloves	3	<input type="checkbox"/> bef-pat. <input type="checkbox"/> bef-asept. <input type="checkbox"/> aft-b.f. <input type="checkbox"/> aft-pat. <input type="checkbox"/> aft.p.surr.	<input type="checkbox"/> HR <input type="checkbox"/> HW <input type="radio"/> missed <input type="radio"/> gloves



Hand Hygiene

A Simple moment with a Big Impact

*World Hand Hygiene Day*



IPC KSA

Our Goal is Your Health

# A Simple Moment with A Big Impact

Every Healthcare Worker's Responsibility

## Fundamental Responsibility

Hand hygiene is a core duty of every healthcare worker, not optional

## Correct & Timely

Must be performed correctly and at the right moment to be effective

## Most Effective Measure

One of the single most powerful tools to prevent infection transmission



Hand Hygiene

A Simple moment with a Big Impact

*WorldHandHygieneDay*



IPC KSA

Our Goal is Your Health

# References

- World Health Organization (WHO). WHO Guidelines on Hand Hygiene in Health Care, 2009.
- World Health Organization (WHO). My 5 Moments for Hand Hygiene.
- Centers for Disease Control and Prevention (CDC). Hand Hygiene in Healthcare Settings.
- Centers for Disease Control and Prevention (CDC). Healthcare-Associated Infections (HAIs).
- Public Health Authority. Basic Infection Control Skills License (BICSL) Manual. 2025.
- Public Health Authority. Infection Prevention and Control Guidelines. Latest update 2023–2024.



Hand Hygiene

A Simple moment with a Big Impact

*WorldHandHygieneDay*



**IPC KSA**

Our Goal is Your Health

# Thank You

# IPC KSA Community



IPC KSA  
Our Goals Your Health

## IPC KSA Social Media Accounts



Youtube



X platform



Whatsapp



Website IPC KSA



LinkedIn